



**Quarterly Economic Performance Bulletin
Issue 1/2019**

Macroeconomic Affairs & Statistics Department

Ministry of Finance & development

Republic of Somaliland

Table of Contents

| | |
|---|-----------|
| 1. FINANCIAL SECTOR..... | 4 |
| 1.1. INFLATION | 4 |
| 1.2. EXCHANGE RATE | 4 |
| 2. FISCAL PERFORMANCE | 6 |
| 2.1. DOMESTIC REVENUE..... | 6 |
| 2.2. GRANTS | 6 |
| 2.3. EXPENDITURE FROM THE GENERAL GOVERNMENT FUND..... | 6 |
| 2.4. DONOR FUNDED PROJECTS..... | 6 |
| 3. TRADE AND TRAVEL | 7 |
| 3.1. LIVESTOCK EXPORTS..... | 7 |
| 3.2. VALUE OF IMPORTS | 9 |
| 3.3. NUMBER OF SHIPS AND CONTAINERS ARRIVALS AT THE BERBERA PORT..... | 11 |
| 3.4. NUMBER OF PASSENGERS ARRIVING AND DEPARTING BY AIR | 11 |
| 4. INVESTMENT AND CONSTRUCTION | 12 |
| 4.1. NUMBER OF BUSINESS LICENCES ISSUED | 12 |
| 4.2. CEMENT IMPORTS | 13 |
| 5. THE ENVIRONMENT – PRECIPITATION | 14 |
| 6. APPENDICES..... | 16 |

List of Tables

| | |
|--|----|
| TABLE 1: FIRST QUARTER 2018 AND 2019 YoY INFLATION | 4 |
| TABLE 2: MONTHLY CHANGE IN SLSHS/USD EXCHANGE RATE (%) | 5 |
| TABLE 3: 2018 AND 2019 FIRST QUARTER EXCHANGE RATE AND YoY PERCENT CHANGE, SLSHS PER USD | 5 |
| TABLE 4: REVENUE AND EXPENDITURE TARGET AND ACTUALS IN THE FIRST QUARTER OF 2019 AND 2018, SLSHS | 7 |
| TABLE 5: LIVESTOCK, SKINS AND HIDES EXPORTED IN THE FIRST QUARTER OF 2018 AND 2019 | 8 |
| TABLE 6: VALUE OF SOMALILAND'S IMPORTS IN THE FIRST QUARTER OF 2018 AND 2019, SLSHS..... | 9 |
| TABLE 7: TOP 10 IMPORT PRODUCTS IN THE FIRST QUARTER OF 2018 BY VALUE, IN SLSHS (CURRENT PRICES)..... | 10 |
| TABLE 8: TOP 10 IMPORT PRODUCTS IN THE FIRST QUARTER OF 2018 BY DUTY, IN SLSHS (CURRENT PRICES) | 10 |
| TABLE 9: TOP 10 IMPORT PRODUCTS IN THE FIRST QUARTER OF 2019 BY VALUE, IN SLSHS (CURRENT PRICES) | 10 |
| TABLE 10: TOP 10 IMPORT PRODUCTS IN THE FIRST QUARTER OF 2019 BY DUTY, IN SLSHS (CURRENT PRICES) | 10 |
| TABLE 11: NUMBER OF CONTAINERS THAT ARRIVED AT THE BERBERA PORT IN THE FIRST QUARTER OF 2018 AND 2019 | 11 |
| TABLE 12: NUMBER OF PASSENGERS ARRIVING AND DEPARTING BY AIR IN THE FIRST QUARTER OF 2019 AND 2018..... | 12 |
| TABLE 13: NUMBER OF BUSINESS LICENSES ISSUED IN THE FIRST QUARTER OF 2018 AND 2019..... | 13 |
| TABLE 14: AMOUNT OF CEMENT BAGS IMPORTED IN THE FIRST QUARTER OF 2018 AND 2019..... | 13 |
| | |
| APPENDIX 1: NUMBER OF CAMELS, CATTLE AND SHEEP & GOATS EXPORTED FROM SOMALILAND, UNIT=HEAD..... | 16 |
| APPENDIX 2: PIECES OF HIDES AND SKIN EXPORTED FROM SOMALILAND, UNIT=PIECES..... | 16 |
| APPENDIX 3: PIECES OF SKIN EXPORTED FROM SOMALILAND, JAN 2018 – MARCH 2019 | 16 |
| APPENDIX 4: NUMBER OF CONTAINERS ARRIVING AT THE BERBERA PORT | 17 |
| APPENDIX 5: NUMBER OF BUSINESS LICENSES ISSUED | 17 |
| APPENDIX 6: NUMBER OF CEMENT BAGS IMPORTED IN SOMALILAND | 17 |
| APPENDIX 7: NUMBER OF AIR PASSENGERS THAT ARRIVED IN AND DEPARTED SOMALILAND FROM JANUARY 2018 TO MARCH 2019 | 17 |
| APPENDIX 8: NUMBER OF BAGS OF CEMENT IMPORTED PER YEAR SINCE 2005 | 18 |
| APPENDIX 9: RAINFALL LEVELS IN MM BY REGION IN 2018 | 18 |

List of Figures

| | |
|--|----|
| FIGURE 1: CPI INDEX AND YEAR-ON-YEAR PERCENTAGE CHANGE, BASE YEAR=2012..... | 4 |
| FIGURE 2: SOMALILAND SHILLING EXCHANGE RATE AGAINST THE USD | 5 |
| FIGURE 3: NUMBER OF SHEEP & GOATS EXPORTED FROM SOMALILAND PER MONTH | 8 |
| FIGURE 4: NUMBER OF CATTLE EXPORTED FROM SOMALILAND PER MONTH..... | 8 |
| FIGURE 5: INFLATION ADJUSTED IMPORTS VALUE, BASE YEAR=2012..... | 9 |
| FIGURE 6: NUMBER OF AIR PASSENGERS THAT ARRIVED IN AND DEPARTED SOMALILAND FROM JAN 2018 TO MARCH 2019..... | 12 |
| FIGURE 7: NUMBER OF BUSINESS LICENSES ISSUED BY THE MINISTRY OF TRADE, TOURISM AND INDUSTRY..... | 13 |
| FIGURE 8: NUMBER OF CEMENT BAGS IMPORTED PER YEAR SINCE 2005 | 14 |
| FIGURE 9: RAINFALL LEVELS IN MM BY LOCATION IN 2018..... | 15 |

1. Financial Sector

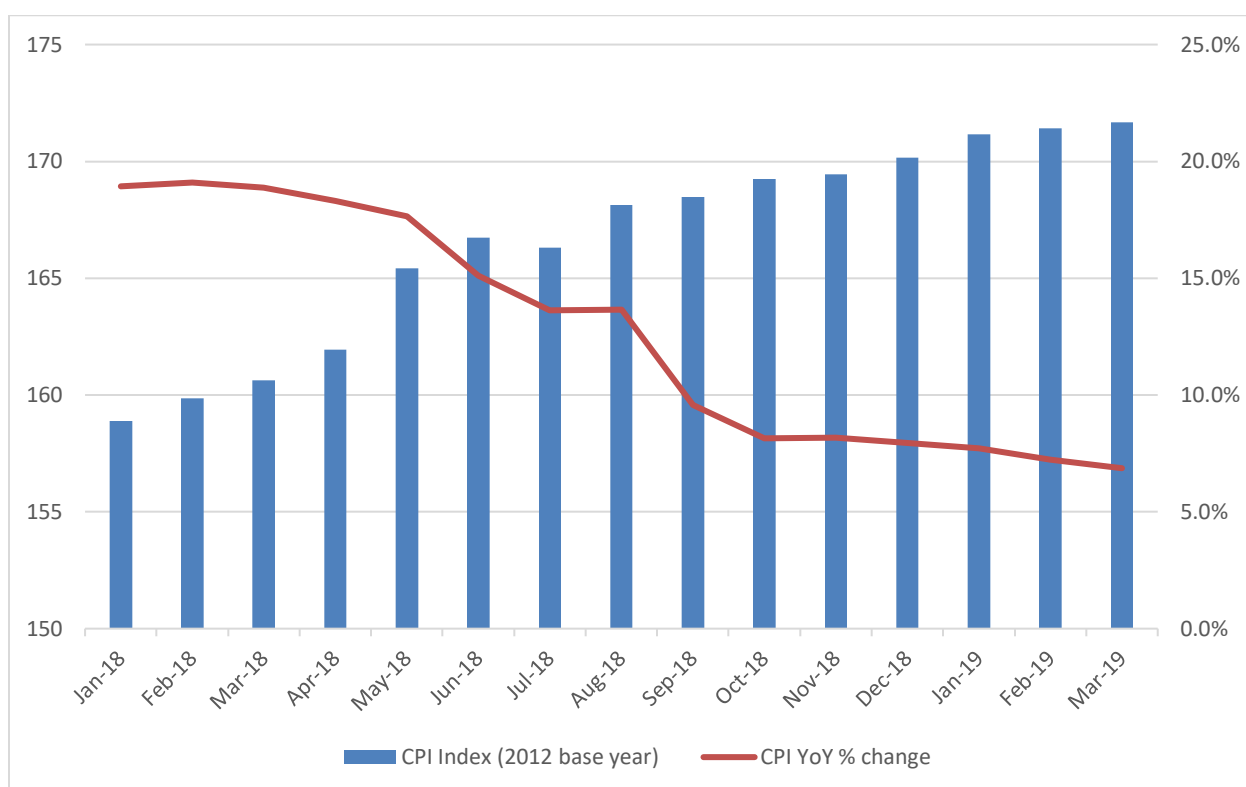
1.1. Inflation

The annual inflation rate in 2019 fell to 6.9% in March from the 7.2% registered in February and the 7.7% in January. The average inflation rate for the first quarter of 2019 was 7.27% which is significantly lower than the 18.97% registered during the same period in 2018. Figure 1 below graphs the CPI and the year-on-year inflation rate from January 2018 to March 2019. As can be seen, the YoY inflation rates have significantly fallen since January 2018, reaching an all-time low for the period in March 2019.

Table 1: First quarter 2018 and 2019 YoY inflation

| Average Jan-March 2018 YoY inflation | Average Jan-March 2019 YoY Inflation |
|--------------------------------------|--------------------------------------|
| 18.97% | 7.27% |

Figure 1: CPI index and Year-on-Year percentage change, Base year=2012



Source: Data from the Ministry of National Planning

1.2. Exchange rate

In January 2019, the exchange rate for the Somaliland Shilling against the US dollar was 9,918 SLShs/usd. This was a 0.8% appreciation from the December 2018 level which stood at 9,840 SLShs per USD. Since

then, the value of the shilling against the USD has significantly improved, reaching a yearlong high of 8,350 SLShs per USD in March 2019—as shown in figure 2 below. In February and March 2019, the currency appreciated by 8.8% and 7.7% from the January and February levels respectively—See table 2. Table 3 below compares the exchange rates in the first quarter of 2019 with those from the corresponding 2018 period. The average exchange rate in Q1 of 2019 (9,106 SLShs per USD) is a 14.5% appreciation from the 10,650 SLShs per USD average recorded in the first quarter of 2018.

Figure 2: Somaliland Shilling exchange rate against the USD



Source: Data from the Central Bank

Table 2: Monthly change in SLShs/USD Exchange rate (%)

| Month | Ja 18 | Fe 18 | Ma 18 | Ap 18 | Ma 18 | Ju 18 | Ju 18 | Au 18 | Se 18 | Oc 18 | No 18 | De 18 | Ja 19 | Fe 19 | Ma 19 |
|----------|-------|-------|-------|-------|-------|-------|-------|-------|-------|-------|-------|-------|-------|-------|-------|
| % Change | - | 1.9 | 0.5 | -0.5 | -5.1 | 0.5 | -0.3 | -1.5 | 1.0 | -0.4 | -0.6 | -1.8 | 0.8 | -8.8 | -7.7 |

Table 3: 2018 and 2019 first quarter Exchange rate and YoY percent change, SLShs per USD

| | 2018 | 2019 | YoY Change |
|---------|--------|-------|------------|
| January | 10,500 | 9,918 | -5.5% |

| | | | |
|---------------------------------------|--------|-------|--------|
| February | 10,700 | 9,050 | -15.4% |
| March | 10,750 | 8,350 | -22.3% |
| Average 1st Quarter | 10,650 | 9,106 | -14.5% |

2. Fiscal Performance

Table 4 below highlights actual revenue and expenditure against targets in the first quarter of 2019 and 2018. Note that the 2018 expenditure data has not been made available yet.

2.1. Domestic Revenue

- Domestic revenue collection during the first quarter of 2019 was 398.8 billion SLShs against a target of 445.5 billion SLShs. This represents a 10.5% underperformance.
- Compared to the same period last year, this actual amount is a 34.7% improvement from the 296.1 billion SLShs collected last year. The actual revenue collected between January and March 2018 was 27.7% below its target of 409.5 billion SLShs.

2.2. Grants

- Grants from the World Bank significantly underperformed against its Q1 target in 2019—by 73.8%. The actual grants received in Q1 were 2.7 billion SLShs against a target of 10.5 billion SLShs.
- Compared to the same period last year, the actual 2019 collection was 75.4% below the 2018 Q1 amount. Actual 2019 grants were 2.7 billion SLShs, while for 2018, they were 11.1 billion SLShs. The actual grants collected in the first quarter of 2018 were only 9.3% below target/forecast.
- Among the four projects being supported by the world bank¹ in 2019, the PFM and CSSP projects were the only ones funded in Q1. The PFM project received 1.5 billion SLShs while the CSSP project received 1.2 billion SLShs².

2.3. Expenditure from the General Government Fund

- Expenditure from the General Government Fund was 314.7 billion SLShs in the first quarter of 2019. This is 29.4% below the target amount, below the allocated amount in the first quarter.

2.4. Donor Funded Projects

- Expenditure on the Donor designated grants in Q1 of 2019 was significantly below the target amount by 76.7%.

¹ **World Bank funded projects:** Public Financial Management Capacity Strengthening Project (PFM), Somali Core Economic Institutions and Opportunities Program (SCORE), Somaliland Civil Service Strengthening Project (CSSP) and Somali Urban Investment Preparation Project (SUIPP)

² The World Bank funding was denominated in US Dollars. An exchange rate of 6,000 SLShs per USD was used in order to keep everything in parity. The total funding received in USD was: \$457,189.73; the PFM project received \$252,148.93 while the CSSP project received \$205,040.80.

Table 4: Revenue and Expenditure target and Actuals in the first quarter of 2019 and 2018, SLSHs

| | 2018 | | | 2019 | | | Actual YoY Dif. (%) |
|--|-----------------|-----------------|-------------|-----------------|-----------------|-------------|------------------------------|
| | Target | Actual | Dif. (%) | Target | Actual | Dif. (%) | |
| Revenue | | | | | | | |
| Domestic Revenue | 409,475,635,030 | 296,098,502,104 | -27.7 | 445,538,614,998 | 398,802,633,314 | -10.5 | 34.7 |
| Grants (World Bank) | 12,274,364,970 | 11,130,610,380 | -9.3 | 10,455,315,000 | 2,743,138,380 | -73.8 | -75.4 |
| Expenditure³ | | | | | | | |
| <i>General Government Fund</i> | | | | 445,538,614,998 | 314,677,955,751 | -29.4 | |
| <i>Donor Designated grants</i> | | | | 10,455,315,000 | 2,439,796,200 | -76.7 | |

Source: Ministry of Finance & Development—Department of Budget & Planning and the Accountant General's Office

3. Trade and Travel

3.1. Livestock exports

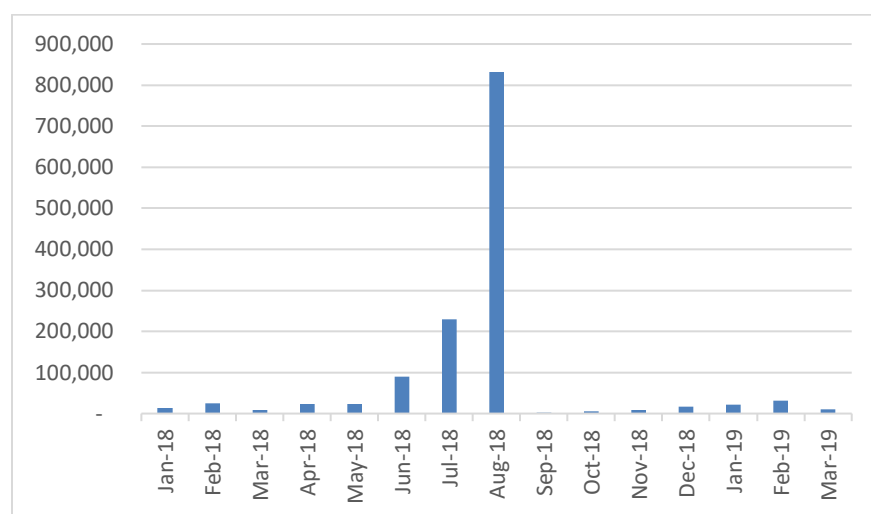
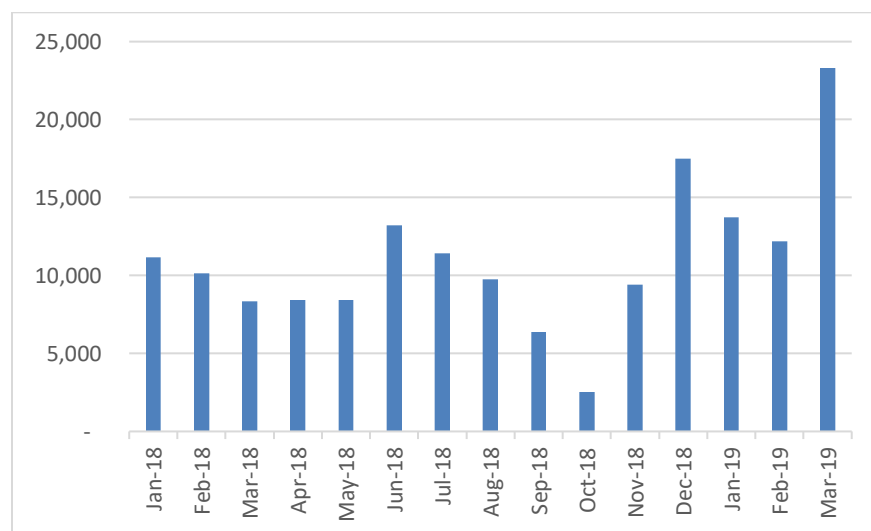
Total Livestock export in the first quarter of 2019 was 112,572 heads compared to the 77,000 number recorded in the same period last year—this represents a 46.2% increase. Camel export contributed little to total livestock export. In Q1 of 2019, only 427 camels were exported; this is 2.3% lower than the 437 recorded in Q1 of 2018. Sheep & Goats export in Q1 of 2019 was 62,934 which was a 34.1% increase from the amount exported during the same period in 2018. Cattle export on the other hand increased by 66% in Q1 of 2019 relative to the same period in 2018. Figures 3 & 4 below indicate the number of Sheep & Goats and Cattle exported per month from January 2018 to March 2019. In figure 3, the months of June, July and August 2018 registered the highest export numbers. This coincides with the Hady period during which there is an increased demand for Sheep & Goat from Saudi Arabia. In figure 4 on the other hand, there are not a lot of noteworthy observations other than that the highest number of cattle exported was registered in March 2019 and the lowest was in October 2018.

³ The expenditure amount on the General Government Fund was obtained from the Accountant General's Office while the Donor Designated grants was downloaded from the IFMIS system on the 7th of April 2019

Table 5: Livestock, Skins and Hides exported in the first quarter of 2018 and 2019

| | Units | 2018 | 2019 | % Change |
|--------------------------|-------|---------|---------|----------|
| Skins | Pcs | 330,200 | 182,000 | -44.9% |
| Hides | Pcs | 142,000 | 0 | -100% |
| Camels | Heads | 437 | 427 | -2.3% |
| Cattle | Heads | 29,639 | 49,211 | 66.0% |
| Sheep & Goats | Heads | 46,924 | 62,934 | 34.1% |

Source: Ministry of Finance, Customs department

Figure 3: Number of Sheep & Goats exported from Somaliland per month**Figure 4:** Number of Cattle exported from Somaliland per month

3.2. Value of imports

The nominal value of Somaliland’s imports in Q1 of 2019—as shown in table 6 below—was 56.7% higher than the value recorded during the same period last year. When we adjust for inflation, this increase is 46.1%. Since January 2018, the real value of Somaliland’s imports in 2012 prices—as shown in figure 5 below—has increased on average. In nominal terms, the amount of duties collected in the first quarter of 2019 was 49.2% higher than the amount collected during the same period of 2018. When we adjusted for inflation, the 2019 first quarter duty collection was 39.1% higher than the corresponding 2018 amount.

Kat and sugar are the highest contributors to the total import value and to the total import duties collected by the government in the first quarter of 2018 and 2019. Tables 7 & 8 and tables 9 & 10 list the top ten import products by value and duties in Q1 of 2018 and 2019 respectively. In the first quarter of 2018, Kat and Sugar accounted for 11% and 8% of total import value respectively; they also accounted for 24% and 4% of the total amount of duties collected respectively. In Q1 of 2019 on the other hand, Kat and Sugar accounted for 9% and 11% of total import value respectively; they also accounted for 21% and 6% of total duties respectively.

Table 6: Value of Somaliland’s imports in the first quarter of 2018 and 2019, SLShs

| | 2018 | 2019 | % Change |
|-------------------------------|-----------------|-----------------|----------|
| Import value (2012 Prices) | 319,105,836,566 | 466,118,030,154 | 46.1% |
| Import value (Current Prices) | 509,981,406,021 | 798,993,507,522 | 56.7% |
| Duty (Current Prices) | 225,669,386,752 | 336,719,581,540 | 49.2% |
| Duty (2012 Prices) | 141,199,563,324 | 196,434,898,347 | 39.1% |

Figure 5: Inflation adjusted imports value, base year=2012

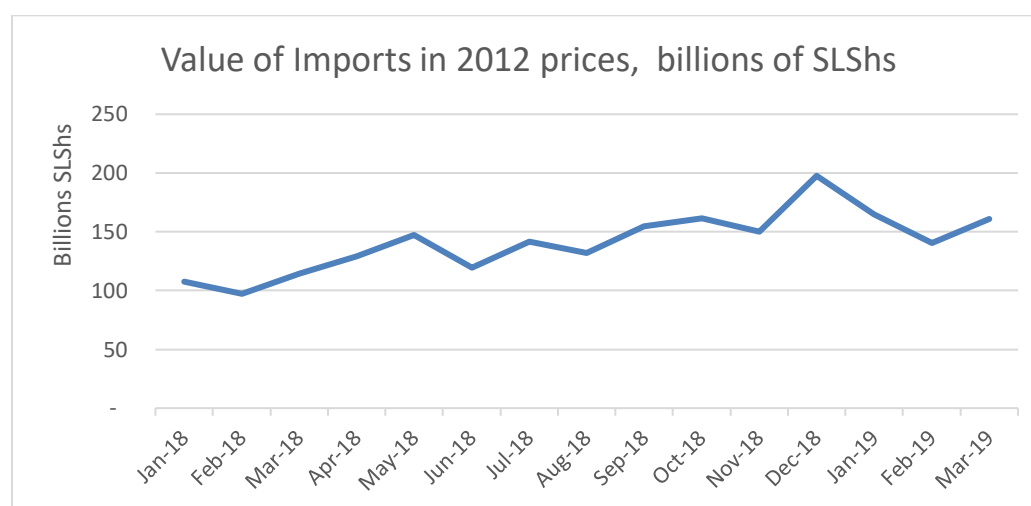


Table 7: Top 10 import products in the first quarter of 2018 by Value, in SLShs (current prices)

| Description | Value | Value as % of total import value |
|-------------------|----------------|----------------------------------|
| Kat | 55,362,807,130 | 11% |
| Sugar | 42,285,189,510 | 8% |
| Pasta/Macaroni | 32,910,191,140 | 6% |
| Wheat Flour | 29,466,020,451 | 6% |
| Rice | 20,112,329,877 | 4% |
| Gas Oil | 19,298,035,125 | 4% |
| Cements | 18,206,382,500 | 4% |
| Milk Powder | 14,167,353,900 | 3% |
| Unstitched Cloths | 12,869,974,600 | 3% |
| Stitched Clothes | 12,683,525,057 | 2% |

Table 8: Top 10 import products in the first quarter of 2018 by Duty, in SLShs (current prices)

| Description | Duties | Duties as % of total import Duties |
|------------------|----------------|------------------------------------|
| Kat | 54,451,366,844 | 24% |
| Sugar | 9,998,531,271 | 4% |
| Saloon Cars | 9,888,781,478 | 4% |
| Pasta/Macaroni | 9,103,654,426 | 4% |
| Cigarette | 7,585,213,394 | 3% |
| Wheat Flour | 6,957,138,384 | 3% |
| Gas Oil | 6,125,564,945 | 3% |
| Cements | 5,022,442,474 | 2% |
| Station Wagon | 4,975,417,487 | 2% |
| Stitched Clothes | 4,898,952,805 | 2% |

Table 9: Top 10 import products in the first quarter of 2019 by value, in SLShs (current prices)

| Description | Value | Value as % of total import value |
|------------------|----------------|----------------------------------|
| Sugar | 85,550,399,856 | 11% |
| Kat | 73,248,049,730 | 9% |
| Cooking Oil | 51,488,790,141 | 6% |
| Wheat Flour | 41,671,217,440 | 5% |
| Mogas "Petrol" | 39,084,005,280 | 5% |
| Rice | 37,637,496,949 | 5% |
| Pasta/Macaroni | 35,721,649,368 | 4% |
| Iron Sheets | 24,103,226,000 | 3% |
| Stitched Clothes | 20,175,343,248 | 3% |
| Iron Bars | 20,126,192,800 | 3% |

Table 10: Top 10 import products in the first quarter of 2019 by Duty, in SLShs (current prices)

| Description | Duties | Duties as % of total import Duties |
|-------------|----------------|------------------------------------|
| Kat | 72,107,294,902 | 21% |

| | | |
|------------------|----------------|----|
| Sugar | 19,354,658,748 | 6% |
| Mogas "Petrol" | 18,138,744,892 | 5% |
| Cigarette | 16,155,617,092 | 5% |
| Cooking Oil | 11,800,325,163 | 4% |
| Pasta/Macaroni | 9,609,167,209 | 3% |
| Wheat Flour | 9,311,069,821 | 3% |
| Rice | 8,695,938,342 | 3% |
| Iron Sheets | 8,066,620,728 | 2% |
| Stitched Clothes | 7,736,259,010 | 2% |

3.3. Number of ships and containers arrivals at the Berbera Port

In the first quarter of 2019, there were 122 ships and boats that arrived at the Berbera Port. Moreover, the number of containers registered at the port during the same period was 10,982; this is a 26% increase from the 8,682 recorded during the same period in 2018—see table 11 below. Appendix 4 lists the number of containers recorded at the port per month from January 2018 to March 2019. In 2018, the total number of containers recorded was 37,941.

Table 11: Number of Containers that arrived at the Berbera Port in the first quarter of 2018 and 2019

| Month | 2018 | 2019 | % Change |
|-------|-------|--------|----------|
| Jan | 2,383 | 3876 | 63% |
| Feb | 2,880 | 2971 | 3% |
| Mar | 3,419 | 4135 | 21% |
| Total | 8,682 | 10,982 | 26% |

Source: Berbera Port

3.4. Number of passengers arriving and departing by air

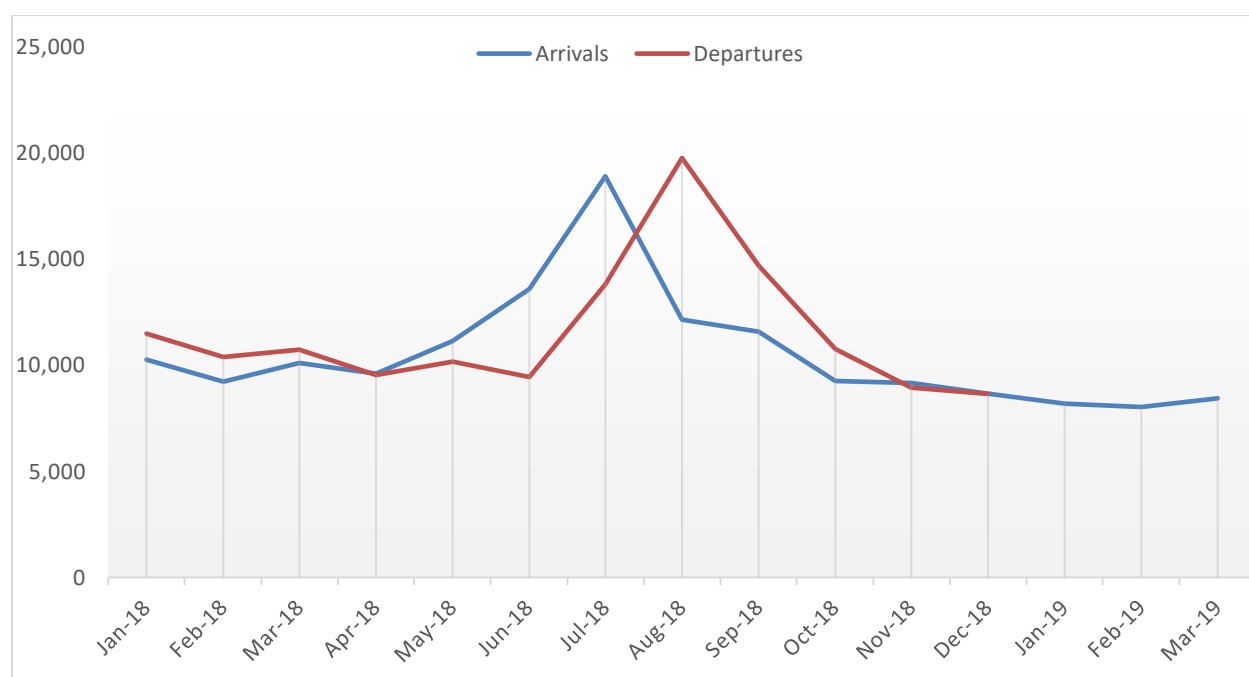
In the first quarter of 2019, there were 24,693 passengers that arrived in Somaliland by air compared to the 29,612 registered during the same period in 2018—this was a 16.6% decrease. The number of departures on the other hand in Q1 of 2019 was 25,099 while in 2018 it was 32,623—representing a 23.1% decrease; see table 12 below. Figure 6 below and appendix 7 show the monthly arrivals and departures from January 2018 to March 2019. Not surprisingly, the highest numbers were registered during the 2018 summer when the diaspora tends to comeback for the holidays. The aircraft carriers that operated at the Cigal International Airport in 2018 were 8 in total: Jubba, Ocean, UNHAS, Air Djibouti, Fly Dubai, Air Arabia, Ethiopian Airlines and *Africa*⁴. On the other hand, only 7 aircraft carriers have been registered so far: Jubba, UNHAS, Echo, Air Djibouti, Fly Dubai, Ethiopian Airlines and Africa.

⁴ Not an official airline

Table 12: Number of passengers arriving and departing by air in the first quarter of 2019 and 2018

| Descriptions | Arriving | Departing |
|------------------------------|----------|-----------|
| 2018 | 133,798 | 131,956 |
| First quarter 2018 | 29,612 | 32,623 |
| First quarter of 2019 | 24,693 | 25,099 |

Source: Aviation Agency

Figure 6: Number of Air passengers that arrived in and departed Somaliland from Jan 2018 to March 2019

4. Investment and construction

The number of business licenses issued and the number of bags of cement imported are used to gauge investment in Somaliland.

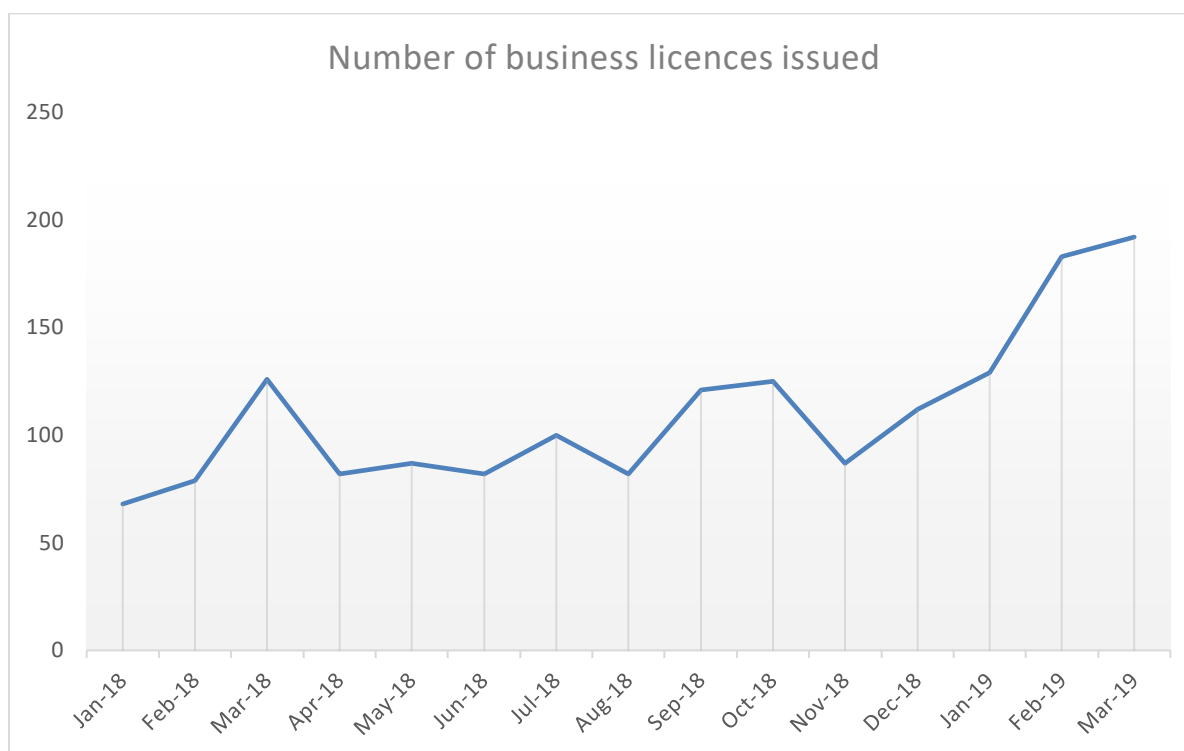
4.1. Number of business licences issued

The number of business licences issued in the first quarter of 2019 were 504 compared to the 273 issued during the same period in 2018—representing an 85% increase (see table 13 below). In figure 7 below, we can see that the first quarter of 2019 has seen the highest number of licenses issued per month since January 2018.

Table 13: Number of business licenses issued in the first quarter of 2018 and 2019

| | 2018 | 2019 | % Change |
|--------------|------------|------------|------------|
| Jan | 68 | 129 | 90% |
| Feb | 79 | 183 | 132% |
| Mar | 126 | 192 | 52% |
| Total | 273 | 504 | 85% |

Source: Ministry of Trade, Tourism and Industry

Figure 7: Number of business licenses issued by the Ministry of Trade, Tourism and Industry

4.2. Cement imports

The number of cement bags imported in the first quarter of 2019 was 30% lower than the amount recorded during the same period in 2018—see table 14 below. While the first quarter of 2019 has seen fewer cement bags imported, figure 8 shows that the annual number of bags of cement imported has significantly increased since 2005.

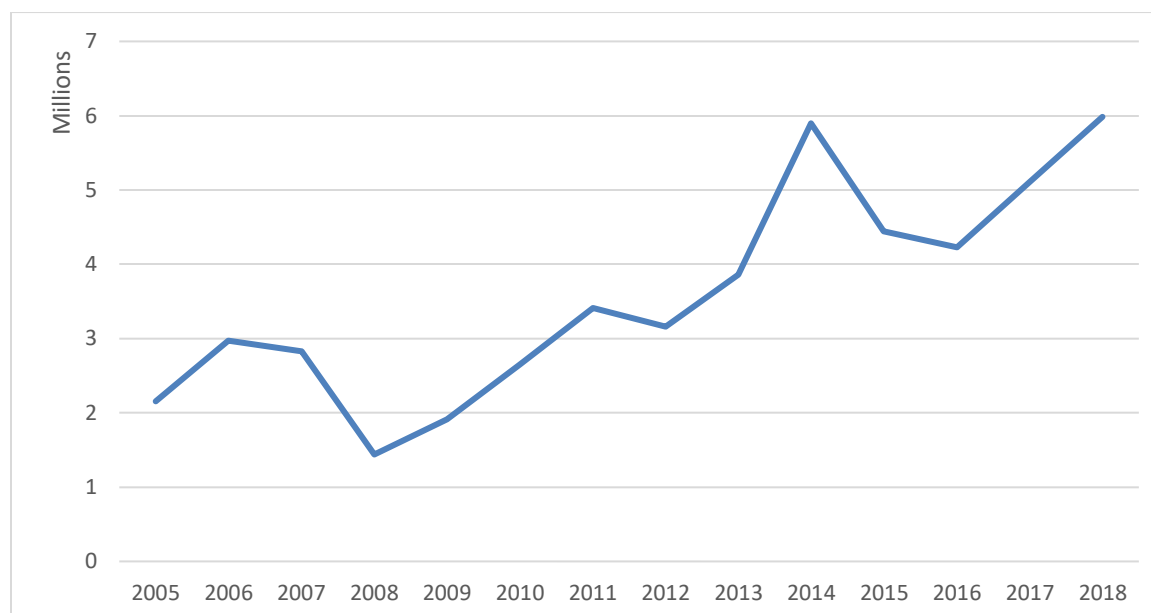
Table 14: Amount of cement bags imported in the first quarter of 2018 and 2019

| | 2018 | 2019 | % Change |
|------------|---------|---------|----------|
| Jan | 931,998 | 602,727 | -35% |
| Feb | 286,320 | 254,124 | -11% |

| | | | |
|--------------|------------------|------------------|-------------|
| Mar | 602,061 | 419,646 | -30% |
| Total | 1,820,378 | 1,276,497 | -30% |

Source: Ministry of Finance, Customs department

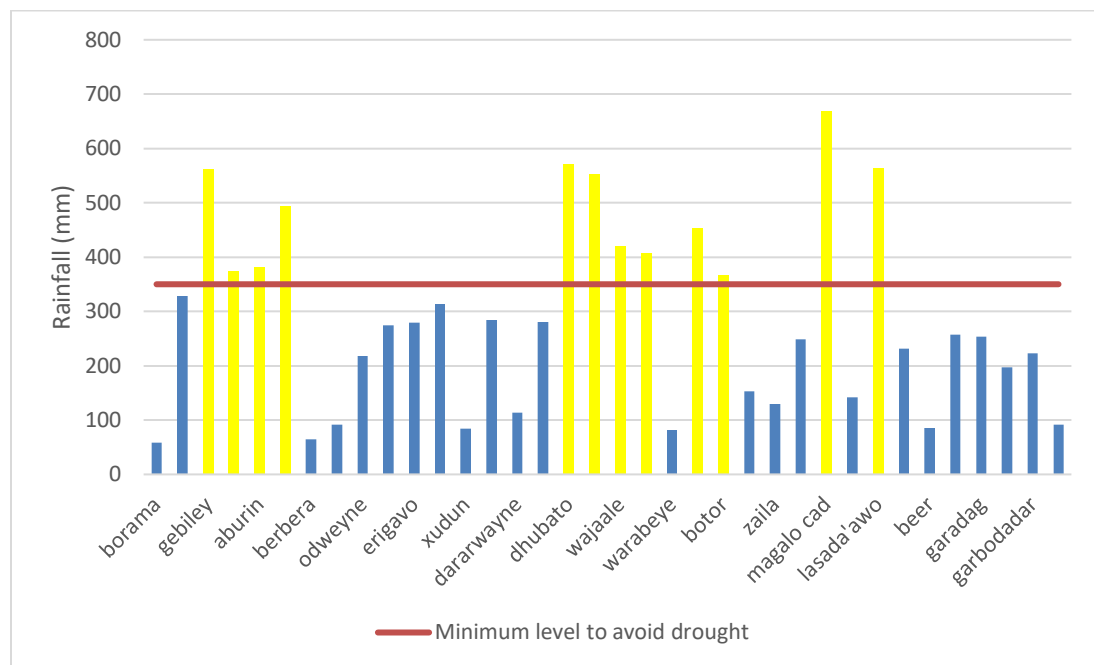
Figure 8: Number of Cement bags imported per year since 2005



5. The Environment – Precipitation

According to the Ministry of Agriculture, Somaliland needs 350mm of rainfall per year to avoid a drought. Figure 9 below shows the amount of rainfall by location in 2018 along with the minimum level required to avoid a drought (350mm). Among the 36 locations shown, only 12 locations registered rainfall levels greater than 350mm. The highest amount of rain was registered in Magalo cad at 669 mm while Borama registered the lowest amount at 58.5 mm.

Figure 9: Rainfall levels in mm by location in 2018



6. Appendices

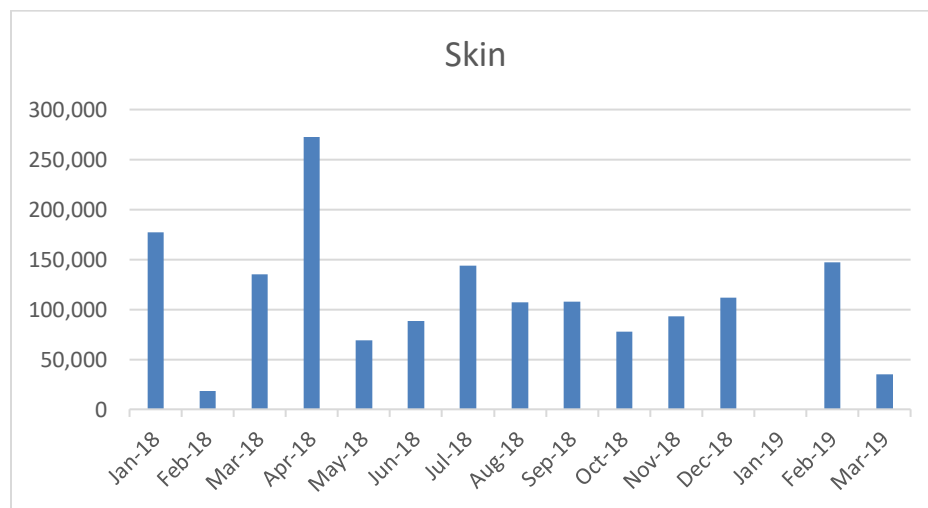
Appendix 1: Number of Camels, Cattle and Sheep & Goats exported from Somaliland, unit=head

| | Jan-18 | Feb-18 | Mar-18 | Apr-18 | May-18 | Jun-18 | Jul-18 | Aug-18 | Sep-18 | Oct-18 | Nov-18 | Dec-18 | Jan-19 | Feb-19 | Mar-19 |
|--------------------------|--------|--------|--------|--------|--------|---------|---------|---------|--------|--------|--------|--------|--------|--------|--------|
| Camels | - | - | 437 | - | - | - | - | - | 40 | - | - | 32 | 114 | 65 | 248 |
| Cattle | 11,150 | 10,142 | 8,347 | 8,433 | 8,433 | 13,209 | 11,432 | 9,773 | 6,360 | 2,528 | 9,421 | 17,477 | 13,738 | 12,181 | 23,292 |
| Sheep & Goats | 13,872 | 24,392 | 8,660 | 23,781 | 23,781 | 90,148 | 230,176 | 832,576 | 2,520 | 5,724 | 7,992 | 16,630 | 22,150 | 31,079 | 9,705 |
| Total | 25,022 | 34,534 | 17,444 | 32,214 | 32,214 | 103,357 | 241,608 | 842,349 | 8,920 | 8,252 | 17,413 | 34,139 | 36,002 | 43,325 | 33,245 |

Appendix 2: Pieces of Hides and Skin exported from Somaliland, unit=pieces

| | Jan-18 | Feb-18 | Mar-18 | Apr-18 | May-18 | Jun-18 | Jul-18 | Aug-18 | Sep-18 | Oct-18 | Nov-18 | Dec-18 | Jan-19 | Feb-19 | Mar-19 |
|--------------|---------|---------|---------|---------|--------|--------|---------|---------|---------|--------|--------|---------|--------|---------|--------|
| Skin | 177,000 | 18,200 | 135,000 | 272,300 | 69,000 | 88,500 | 144,000 | 106,800 | 108,000 | 78,000 | 93,000 | 111,850 | | 147,000 | 35,000 |
| Hides | | 142,000 | | | | | | | | | | | | | |
| Total | 177,000 | 160,200 | 135,000 | 272,300 | 69,000 | 88,500 | 144,000 | 106,800 | 108,000 | 78,000 | 93,000 | 111,850 | | 147,000 | 35,000 |

Appendix 3: Pieces of skin exported from Somaliland, Jan 2018 – March 2019



Appendix 4: Number of containers arriving at the Berbera Port

| Month | Jan-18 | Feb-18 | Mar-18 | Apr-18 | May-18 | Jun-18 | Jul-18 | Aug-18 | Sep-18 | Oct-18 | Nov-18 | Dec-18 | Jan-19 | Feb-19 | Mar-19 |
|-------------------|--------|--------|--------|--------|--------|--------|--------|--------|--------|--------|--------|--------|--------|--------|--------|
| No. of containers | 2,383 | 2,880 | 3,419 | 2,930 | 3,662 | 3,344 | 2,708 | 3,641 | 2,400 | 3,800 | 3,434 | 3,340 | 3876 | 2971 | 4135 |

Appendix 5: Number of business licenses issued

| Month | Jan-18 | Feb-18 | Mar-18 | Apr-18 | May-18 | Jun-18 | Jul-18 | Aug-18 | Sep-18 | Oct-18 | Nov-18 | Dec-18 | Jan-19 | Feb-19 | Mar-19 |
|--------------|--------|--------|--------|--------|--------|--------|--------|--------|--------|--------|--------|--------|--------|--------|--------|
| No. Licenses | 68 | 79 | 126 | 82 | 87 | 82 | 100 | 82 | 121 | 125 | 87 | 112 | 129 | 183 | 192 |

Appendix 6: Number of Cement bags imported in Somaliland

| Month | Jan-18 | Feb-18 | Mar-18 | Apr-18 | May-18 | Jun-18 | Jul-18 | Aug-18 | Sep-18 | Oct-18 | Nov-18 | Dec-18 | Jan-19 | Feb-19 | Mar-19 |
|-----------------|---------|---------|---------|--------|---------|--------|---------|---------|---------|---------|---------|---------|---------|---------|---------|
| No. Cement Bags | 931,998 | 286,320 | 602,061 | 37,041 | 718,543 | 12,832 | 454,385 | 957,402 | 388,123 | 716,482 | 438,448 | 440,927 | 602,727 | 254,124 | 419,646 |

Appendix 7: Number of Air Passengers that arrived in and departed Somaliland from January 2018 to March 2019

| Month | Jan-18 | Feb-18 | Mar-18 | Apr-18 | May-18 | Jun-18 | Jul-18 | Aug-18 | Sep-18 | Oct-18 | Nov-18 | Dec-18 | Jan-19 | Feb-19 | Mar-19 |
|------------|--------|--------|--------|--------|--------|--------|--------|--------|--------|--------|--------|--------|--------|--------|--------|
| Arrivals | 10,275 | 9,222 | 10,115 | 9,606 | 11,158 | 13,596 | 18,922 | 12,167 | 11,601 | 9,282 | 9,181 | 8,673 | 8,201 | 8,041 | 8,451 |
| Departures | 11,501 | 10,384 | 10,738 | 9,538 | 10,164 | 9,458 | 13,819 | 19,784 | 14,698 | 10,765 | 8,953 | 8,658 | | | |

Appendix 8: Number of bags of cement imported per year since 2005

| Year | Bags of Cement |
|-------------|-----------------------|
| 2005 | 2,154,388 |
| 2006 | 2,973,846 |
| 2007 | 2,826,674 |
| 2008 | 1,439,211 |
| 2009 | 1,915,859 |
| 2010 | 2,651,499 |
| 2011 | 3,412,159 |
| 2012 | 3,155,940 |
| 2013 | 3,858,203 |
| 2014 | 5,900,477 |
| 2015 | 4,443,294 |
| 2016 | 4,228,628 |
| 2017 | 5,105,848 |
| 2018 | 5,984,561 |

Appendix 9: Rainfall levels in mm by region in 2018

| Station | Rainfall(mm) |
|----------------|---------------------|
| borama | 58.5 |
| dila | 328 |
| gebiley | 562 |
| Hargeisa | 374 |
| aburin | 382 |
| quljeed | 493.5 |
| berbera | 64.5 |
| burao | 92 |
| odweyne | 218.5 |
| aynabo | 274.5 |
| erigavo | 279 |
| elafwayne | 313.5 |
| xudun | 84.5 |
| malawle | 284.5 |
| dararwayne | 113.5 |
| caddaadle | 281 |
| dhubato | 572 |
| baligubadle | 553.5 |
| wajaale | 420 |
| sheikh | 407 |
| warabeye | 81.5 |
| gacan libah | 452.5 |
| botor | 366 |
| lughayo | 153 |
| zaila | 130 |

| | |
|-------------------|-------|
| alaybaday | 249 |
| magalo cad | 669 |
| salaxley | 142 |
| lasada'awo | 563.5 |
| gatiitatey | 232 |
| beer | 85 |
| las'anod | 257 |
| garadag | 254 |
| baki | 197.5 |
| garbodadar | 223 |
| taysa | 91.5 |

Source: Ministry of Agriculture